

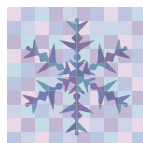
## Issue 44 - Monday 14<sup>th</sup> January 2019

### Dates for your Diary

14 <sup>th</sup> January	-	Pantomime
15 <sup>th</sup> January	-	Swimming Gala PTFA Meeting
16 <sup>th</sup> January	-	HS2 Workshops - Y5 & Y6
24 <sup>th</sup> January	-	Young Voices Concert
1 <sup>st</sup> February	-	The Big Breakfast
7 <sup>th</sup> & 8 <sup>th</sup> February	-	Y5 Bikeability
14 <sup>th</sup> & 15 <sup>th</sup> February	-	Y5 Bikeability
15 <sup>th</sup> February	-	PTFA Quiz Night School Breaks up for Half Term
25 <sup>th</sup> February	-	Back to School
28 <sup>th</sup> February	-	Parents Evening Late 5.30p.m. - 8.00p.m.
5 <sup>th</sup> March	-	Individual Photographs Parents Evening Early 3.30p.m. - 6.00p.m.
7 <sup>th</sup> March	-	Y1 Visit to Gentleshaw Wildlife Centre
8 <sup>th</sup> March	-	World Book Day
12 <sup>th</sup> March	-	World Maths Day
15 <sup>th</sup> March	-	Comic Relief
20 <sup>th</sup> - 22 <sup>nd</sup> March	-	Y4 Visit Kingswood OEC
5 <sup>th</sup> April	-	Class Photographs
12 <sup>th</sup> April	-	Easter Eggstravaganza School Breaks up for Easter Holiday
29 <sup>th</sup> April	-	Back to School

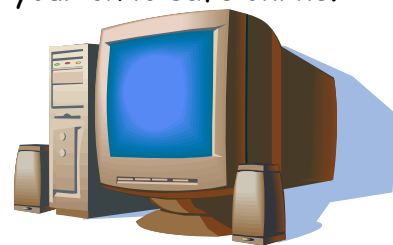
### BAD WEATHER

At this time of year our weather is a little unpredictable. Hopefully we will not have a repeat of last year's Beast from the East. We will endeavour to keep the school open as long as it is safe to do so and our staff can safely get to work. Please check the school website for information about school closures on the morning of any snow storms.



### INTERNET SAFETY WORKSHOP

In conjunction with the NSPCC the school will be running an online safety workshop for parents. It will be taking place at 2.00 p.m. on Monday 28<sup>th</sup> January in the School Hall. Come along and get advice on how to keep your child safe online.



## SCHOOL ATTENDANCE

Thank you to everyone who has used the school's new electronic signing in system - it seems to be working well.

Attendance for the Autumn Term is as follows:

<b>Class Reception</b>	<b>96.32%</b>	<b>Class Three</b>	<b>97.94%</b>
<b>Class One</b>	<b>96.36%</b>	<b>Class Four</b>	<b>96.94%</b>
<b>Class Two</b>	<b>97.54%</b>	<b>Class Five</b>	<b>95.93%</b>
		<b>Class Six</b>	<b>97.59%</b>

Children who had 100% attendance will be receiving a certificate to celebrate this super achievement.

## MEDICAL APPOINTMENTS

As we are striving to improve attendance rates at school we have been advised by the Education Welfare Service that if children have to attend medical appointments in school time evidence of such appointments need to be provided. This can be in the form of an appointment card or hospital letter. Thank you for your co-operation in this matter.

## SCHOOL DINNER MONEY

Can I remind you that the cost of a school dinner in Key Stage 2 is £2.26 per day? If you could please send this into school on a Monday in a labelled envelope it would be appreciated by the Office Staff.

Currently we have over £200 outstanding for unpaid school dinners and this has a big impact on our school budget.

## TOPICS

This term's topics are as follows:

Class Reception	-	Dinosaur Planet
Class 1	-	Splendid Skies
Class 2	-	Towers, Tunnels & Turrets
Class 3	-	Predators
Class 4	-	Potions
Class 5	-	Terrifying Tudors
Class 6	-	Frozen Kingdom

If anyone has an interest in any of these topics and would like to help out in school please come in and see us.

## THE BIG BREAKFAST

Each January the children and the staff of The Croft celebrate the importance of starting the day with a good healthy breakfast.

The children bring their PJ's to school and share breakfast with their class mates. Cereal, toast and a drink will be available to the children, they will be taught about healthy eating.

## CHRISTMAS COLLECTIONS

Money raised from your kind donations at our Christmas performances totalled an amazing £396. This has been donated to Cardiomyopathy UK.